

Indoor AP 8533



Description

802.11ac Wave 2 with MU-MIMO and tri-radios for high-density and security

Product Positioning

- Specifically designed for high density applications, RF security and guest engagement
- Tri-radios, triple sensor technology
- Integrated Bluetooth and BLE for guest engagement

Key Differentiators

- 4x4:4 wave 2 technology supporting the highest capacity
- Dedicated dual band RF radio for full time WIDs/WIPS and RF spectrum analysis
- Scales from 1 AP, to controller-less networks of 64 APs, to networks up to 25,000 AP with NOC controllers and cloud
- Internal and external antennas

Indoor AP 8432



Description

802.11ac Wave 2 with MU-MIMO for high-density, security, and Internet of Things (IoT)

Product Positioning

- Specifically designed for high density applications, RF security, guest engagement and IoT
- Integrated Bluetooth and BLE for guest engagement
- Enables Internet of Things with PoE pass-through

Key Differentiators

- 4x4:4 wave 2 technology supporting the highest capacity
- Dedicated dual band RF radio for full time WIDs/WIPS and RF spectrum analysis
- Built in PoE out to connect with third party IoT devices
- Scales from 1 AP, to controller-less networks of 64 APs, to networks up to 25,000 AP with NOC controllers and cloud

Indoor AP 7632i/e



Description

High-performance at mid-market price

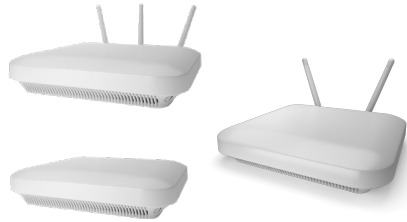
Product Positioning

- Ideal for mid-market applications in retail, hospitality, manufacturing
- High performance access points with MU-MIMO technology to serve multiple clients simultaneously in dense user environments
- Two variants with internal and external antennas for different applications
- AP 7632e external also has extended temperature range for more demanding environments

Key Differentiators

- 802.11ac 2x2:2 Wave 2 MU-MIMO
- Fully integrated WiNG controller to build controller-less networks up to 25 APs or with NOC or cloud solutions
- Operates with premise or cloud based NOC controllers
- Future support with ExtremeCloud
- Integrated BLE

Indoor AP 7532, AP 7522



Description

High-performance, cost-effective 802.11ac Wave 1 technology

Product Positioning

- Mid-tier, high performance Wave 1 access points for cost sensitive applications
- Dual radio, supporting 2.4 GHz and 5 GHz and 802.11 a/b/g/n/ac devices

Key Differentiators

- AP 7532 is 3x3:3
- AP 7522 is 2x2:2
- Scales from standalone Hotspot AP to controller-less networks of 64 APs with virtual controller technology with no AP licensing or hardware appliance
- Supported by WiNG NOC controllers and cloud
- Internal and external antennas

Indoor AP 7622



Description

Purpose-built for massive distributed branch solutions

Product Positioning

- Price/performance to meet the needs of massive deployments of distributed branch offices.
- Configurable RF and performance flexibility to tune to specific needs
- Simple deployments, choice of standalone, simple autonomous networks or NOC/cloud solutions

Key Differentiators

- 802.11ac wave 1
- Configurable radios as single 2x2:2 or dual 1x1:1
- Fully integrated WiNG controller to build controller-less networks up to 25 APs or with NOC or cloud solutions for branch solution applications
- Integrated BLE for guest engagement

Wall Plate AP 7602



Description

Specifically designed for in-room hospitality applications

Product Positioning

- Purpose built wall plate access point with integrated BLE and Ethernet ports
- Slim and trim, the AP hides in plain sight for clean room aesthetics
- Quick install, less than 2 minutes with secured mounting

Key Differentiators

- 802.11ac Wave 1
- Configurable radios as single 2x2:2 or dual 1x1:1
- Fully integrated WiNG controller to build controller-less networks up to 25 APs or with NOC or cloud solutions
- Integrated managed Ethernet ports
- Integrated BLE for guest engagement

Wall Plate AP 7612



Description

Specifically designed for in-room hospitality applications

Product Positioning

- Ideal for hotel rooms and dormitories
- Purpose built 802.11ac wave 2 wall plate access point with integrated BLE and Ethernet ports
- Slim and trim, the AP hides in plain sight for clean room aesthetics
- Quick install, less than 2 minutes with secured mounting

Key Differentiators

- 802.11ac 2x2:2 Wave 2 MU-MIMO
- Fully integrated WiNG controller to build highly cost effective controller-less networks up to 25 APs
- Operates with premise or cloud based NOC controllers
- Future support with ExtremeCloud
- Integrated managed EthernetPorts
- Integrated BLE for guest engagement

Wall Plate AP 7502



Description

Specifically designed for in-room hospitality applications

Product Positioning

- Purpose built wall plate access point with integrated Ethernet ports and PoE pass through
- Smallest possible, design measuring 90mm x 95mm
- Quick install, less than 2 minutes with secured mounting

Key Differentiators

- 802.11ac Wave 1
- Dual radios, 2.4GHz and 5 GHz
- The smallest 802.11ac wall plate AP available
- Fully integrated WiNG controller to build controller-less networks up to 25 APs or with NOC or cloud solutions
- Integrated managed Ethernet ports
- PoE pass-through to power additional device (e.g. IP phone)
- Integrated BLE for guest engagement

Wall Plate AP TW 522



Description

Solution wireless over VDSL

Product Positioning

- Industry unique solution
- Purpose built for hospitality in-room Wi-Fi
- Allows hotels to deliver Wi-Fi over existing telephone twisted pair into the guest room
- Hide in plain sight design with simple and fast deployments, less than 2 minutes per room

Key Differentiators

- Patented line power over phone wire
- Uses existing telephone (CAT3) twisted pair which is installed in all rooms already. Saving cost of pulling new CAT 5/6 cables and disrupting guest
- No disruption to guest, install can be done during normal room service

Outdoor AP 7662i/e



Description

Designed for harsh environments;
sub-zero temperature

Product Positioning

- Offered in two variants with internal and external antenna options
- Perfect for retail inventory, staff, and guest, hospitality, transportation and logistics and warehouses
- Operates in harsh and extreme conditions of manufacturing plants, warehouse freezers, outdoor parks and sports fields, shipyards

Key Differentiators

- AP 7662 Wave 2 802.11ac IP67 outdoor rated access point
- Cellular Coexistence Filter (ACF) - Minimizes interference from 3G/4G, cellular networks, distributed antenna systems and commercial small cell/femtocell equipment
- External antenna variation features an outdoor rated IP67 enclosure and internal circuitry to extend the operating temperature from -40C to 70C; ideal for maximum range and performance in demanding industrial applications
- Embedded GPS

WiNG Controllers: NX5500, NX7500, NX9600, VX9000



Description

Unrivalled scalability in distributed
branch solutions

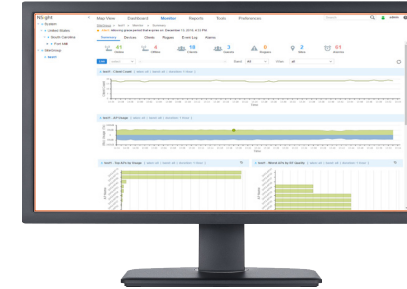
Product Positioning

- WiNG enjoys unprecedented scalability and offers controllers to meet the specific needs of branch solutions
- Hierarchical software allows uses of various size controllers, as well as controller-less branches to be managed

Key Differentiators

- The same WiNG OS operates across all controllers, as well as on the access points themselves
- AP support:
 - NX5500: 512
 - NX7500: 1048
 - NX9600: 10,240
 - VX9000: 25,000
- Wireless client support scales from 16K to over 200,000

Extreme NSight



Description

Provides rich analytics for easy network
visualization, monitoring, and troubleshooting

Product Positioning

- Flexible and graphical WLAN management solution that makes it easy to access the wealth of powerful information
- Keeps you on top of all the key characteristics of your network:
 - Network analytics for trend analysis
 - Role-Based Dashboards for various users
 - Interactive Maps for quick problem resolution
 - Customized reports

Key Differentiators

- Network analytics is displayed in easy-to-read highly-graphical screens, in real time or over a time period of your choosing, for easy trend analysis
- Create custom role-based dashboards from help desk staff to the CIO
- Interactive maps drill down into a site or a specific access point within a site — as well as its connected client devices — all with just a few clicks
- Comprehensive library of pre-defined and customizable reports



Extreme AirDefense



Description

Industry Leading Wireless Intrusion Prevention System protects your WiFi network and assists with enforcing regulatory compliance requirements

Product Positioning

- Wireless IPS system protects your network against over the air attacks including detecting and terminating rogue access points
- It combines the information collected from the network of sensors or access points with the analytical power of an intelligent central console
- Provides 24/7 network monitoring, automate security, and enable regulatory compliance

Key Differentiators

- Detects 199 wireless threats, reducing the chances of damage to your network
- Advanced Forensics module captures 325 data points every minute for every identified wireless device
- Administrators have the ability to rewind and analyze detailed records of wireless activity in support of forensics investigations or network performance troubleshooting
- Wireless Vulnerability Assessment module uses an industry-first, patented technology to remotely test wireless security

ExtremeGuest



Description

ExtremeGuest is a robust and comprehensive guest engagement solution which gives unique opportunity for the retailer to personalize engagement by understanding the customer behavior and interest, and then tailor services based on the insights

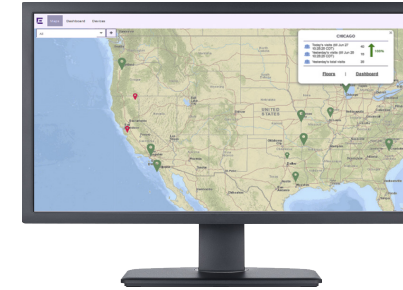
Product Positioning

- Provision and manage access across multiple networks
- Deeper visibility into guest application analytics'
- Integrated fine-grain location awareness
- Single Login with
 - Social ID/SMS
 - Social media usage
 - Device analytics
 - Comprehensive reporting

Key Differentiators

- Scalability: Support for up to
- 10 million users
- Wired Captive Portal
- Operations Distributed and Centralized
- Licensing model
- Site specific splash pages
- Unlimited # of dashboards

ExtremeLocation



Description

ExtremeLocation is a resilient and scalable cloud-based location and analytics solution offered by Extreme Networks as a subscription service, to align with your new business imperatives

Product Positioning

- Provides a choice of location resolution from presence which detects a device is present, to a zone which locates a device in an area, to position, which provides a location of the device
- Delivers powerful analytics and trends which can be viewed by administrators or extracted by campaign and policy engines via the RESTful APIs
- Provides extensive real-time and historical location analytics which can be chosen for a duration, including site, zone and associate analytics
- Administrators can view real-time dashboards and monitor trends of sites, zones and associates

Key Differentiators

- ExtremeLocation has the most extensive real-time and historical analytics for site, zone and associates
- ExtremeLocation is the ONLY solution to offer associate tracking and analytics
- Map View is unique to ExtremeLocation, providing a real-time map of activities taking place on a map, being able to visually see traffic flow, heat maps, and detecting when congestion is occurring to send staff to help alleviate
- Supporting what could be thousands of sites and up to 100,000 APs, ExtremeLocation is a highly scalable and high performance solution

